

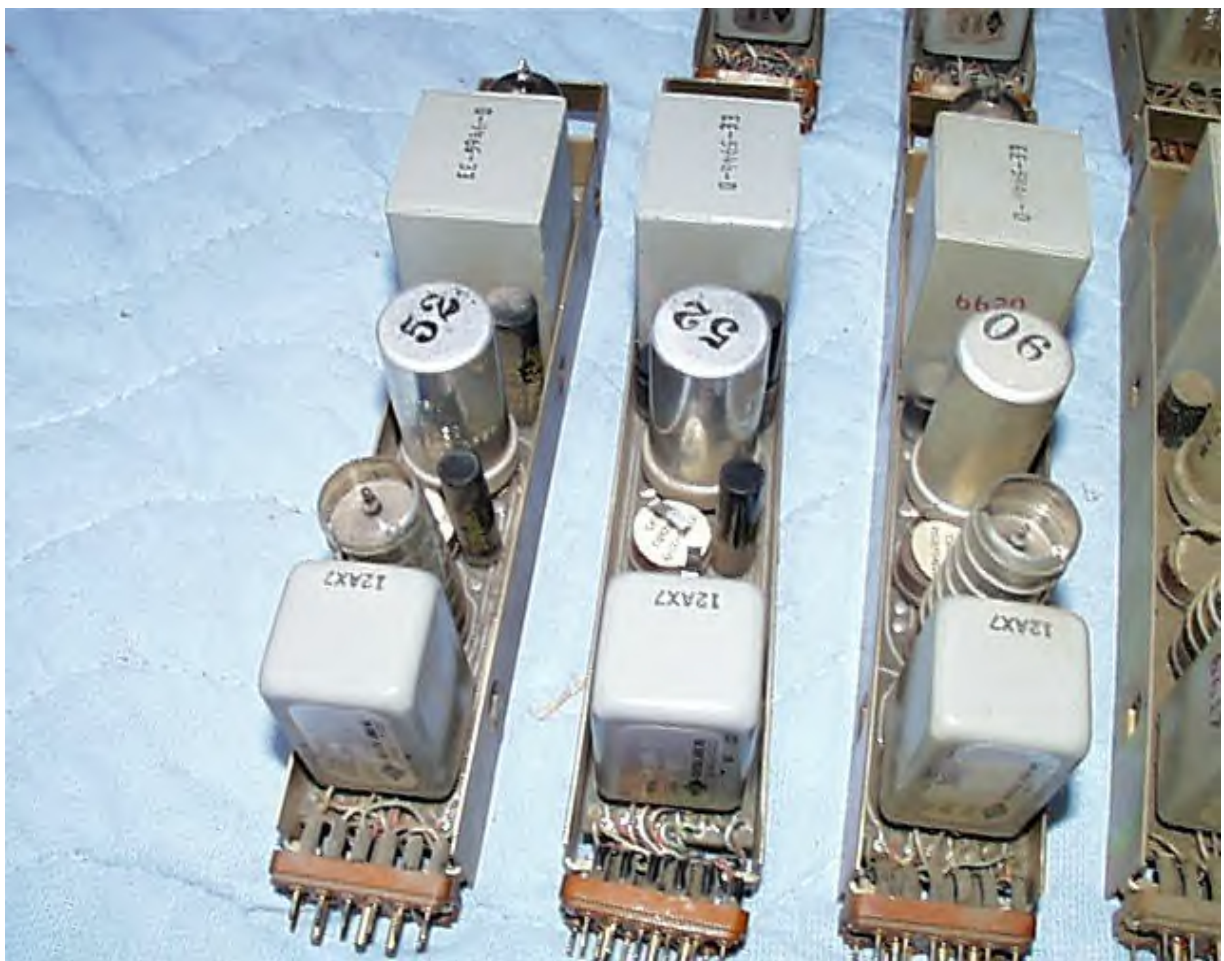
Here is a fine example of a **Universal Audio** tube console Built around 1965 (see last page)

This one was on for sale e-bay for quite a while.





These are 1008 Pre-Amps
The other unit is the one Power Supply





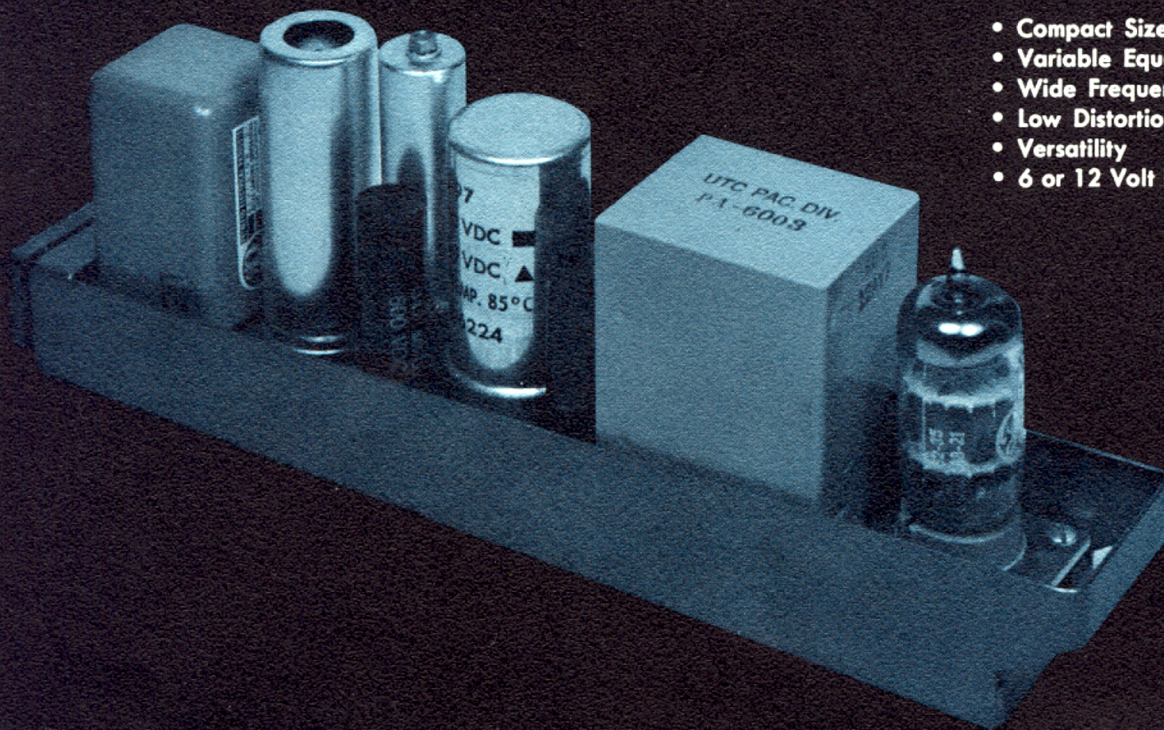
UNIVERSAL AUDIO INC.

6000 SUNSET BLVD., HOLLYWOOD 28, CALIFORNIA

MICROPHONE PREAMPLIFIER MODEL 1008A

ADVANTAGES

- Compact Size
- Variable Equalization
- Wide Frequency Range
- Low Distortion
- Versatility
- 6 or 12 Volt Filament Connection



Universal Model 1008A is a miniature two-stage high-performance microphone preamplifier housed in a modular plug-in type package. Excellent characteristics together with a unique provision for use with an external plug-in equalizer (Universal 508A) make the Model 1008A a highly versatile unit.

The stability of this new model under every conceivable reactive load characteristic is outstanding. Frequency response has been extended beyond 30,000 cycles with negligible phase shift throughout the usable audio range.

Model 1008A is the only compact microphone preamplifier available today with provision for variable equalization. The advantages of this equalization method are discussed in an article which appeared in the Audio Society Journal, April, 1960. When operated in conjunction with the Universal Equalizer Model 508A, equalization is accomplished

in a manner which affords no loss in gain. Low frequency equalization can be set at 0; plus 3, 6, or 9 db boost; and minus 3 or 6 db roll-off at 50 cps. High frequency equalization can be set at 0; plus 3, 6, or 9 db boost; and minus 3 or 6 db roll-off at either 5 or 10 kc. The 1008A can also be operated without the equalizer as an uncompensated preamplifier.

The 1008A preamplifier is available with or without the 508A equalizer. The 1008A is designed for rack mounting in plug-in trays and can be installed remotely up to 25 feet from the equalizer. When used in conjunction with the 508A equalizer, one resistor is removed from the preamplifier connector and the equalizer cable is connected in its place. With the equalizer substituted for this resistor, neither gain nor distortion is affected. Military type printed circuit boards are used in the preamplifier to insure consistent quality and performance.



SPECIFICATIONS

GAIN: 40 db, terminated input
45 db, unloaded input

INPUT IMPEDANCE: 30 to 600 ohms
(Input transformer
virtually unloaded)

OUTPUT LOAD IMPEDANCE: 150 or
600 ohms balanced. (Due
to low internal impedance,
output voltage change with
change in load is negli-
gible.)

MAXIMUM OUTPUT POWER: +20 dbm at
less than 0.5% IM. +22 dbm
at less than 1% IM. (Using
40 cycles at 7 kc, 4:1.
THD less than 0.7% from
50 cycles to 15 kc.

MAXIMUM INPUT LEVEL: -20 dbm.

OUTPUT NOISE LEVEL: Equivalent to
input signal of less than
-126 dbm.

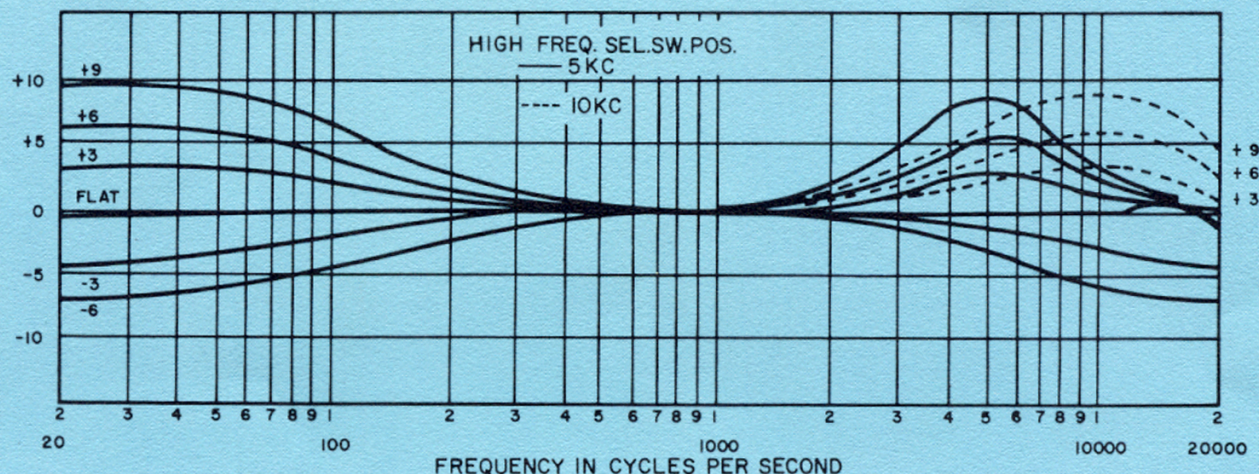
FREQUENCY RESPONSE: ± 1 db, 20 to
30,000 cps.

TUBE COMPLEMENT: One 12AX7 (ECC83)
and one 12AY7. First stage
cascode and second parallel.
Total net feedback is 33 db.

POWER REQUIREMENTS: 325V @ 9 MA,
6.3V @ 600 MA or 12.6 V
@ 300 MA.

DIMENSIONS: 1½ in. wide (incl tray)
3¼ in. high
9 in. long

FREQUENCY RESPONSE CURVES
1008A PREAMPLIFIER WITH 508A EQUALIZER



PLUG-IN EQUALIZER — MODEL 508A

The 508A plug-in equalizer is a variable, environmental equalizer network which substitutes for one resistor in the 1008A Preamplifier.

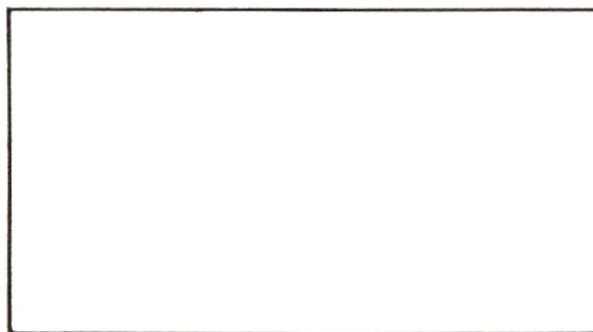
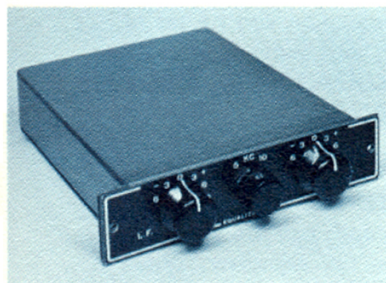
Only 1 pair of two conductor shielded is required for the connection of the equalizer unit and it may be operated as far as 25 feet from the 1008A Preamplifier satisfactorily.

The gain of the 1008A Preamplifier remains constant at 1000 cycles with or without the equalizer connected.

Military type printed circuitry is used for stability and consistent performance.

508A H — for horizontal mounting.

508A V — for vertical mounting.



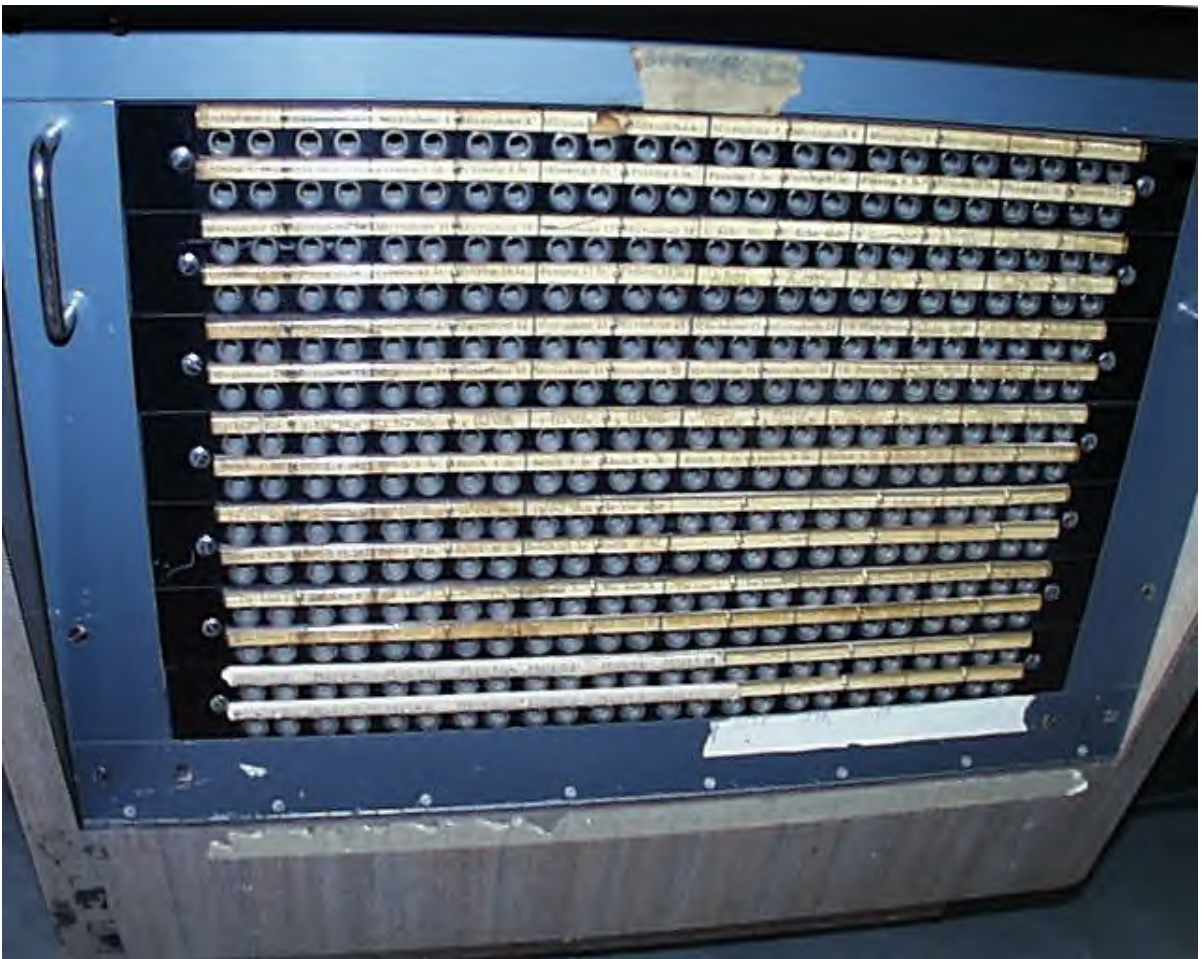


Top flips up for easy access





Patch Bays









Pre-amp Trays

